

43/160

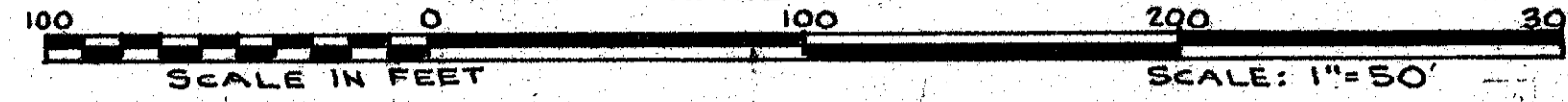
PARCEL A-4 SABAL LAKE OF BOCA WEST - P.U.D.

IN PART OF SECTION 9, TWP. 47 S., RGE. 42 E.

PALM BEACH COUNTY, FLORIDA
IN 2 SHEETS SHEET NO. 2

GEE & JENSON
ENGINEERS-ARCHITECTS-PLANNERS, INC.
WEST PALM BEACH, FLORIDA

APRIL 1981



160

NOTES

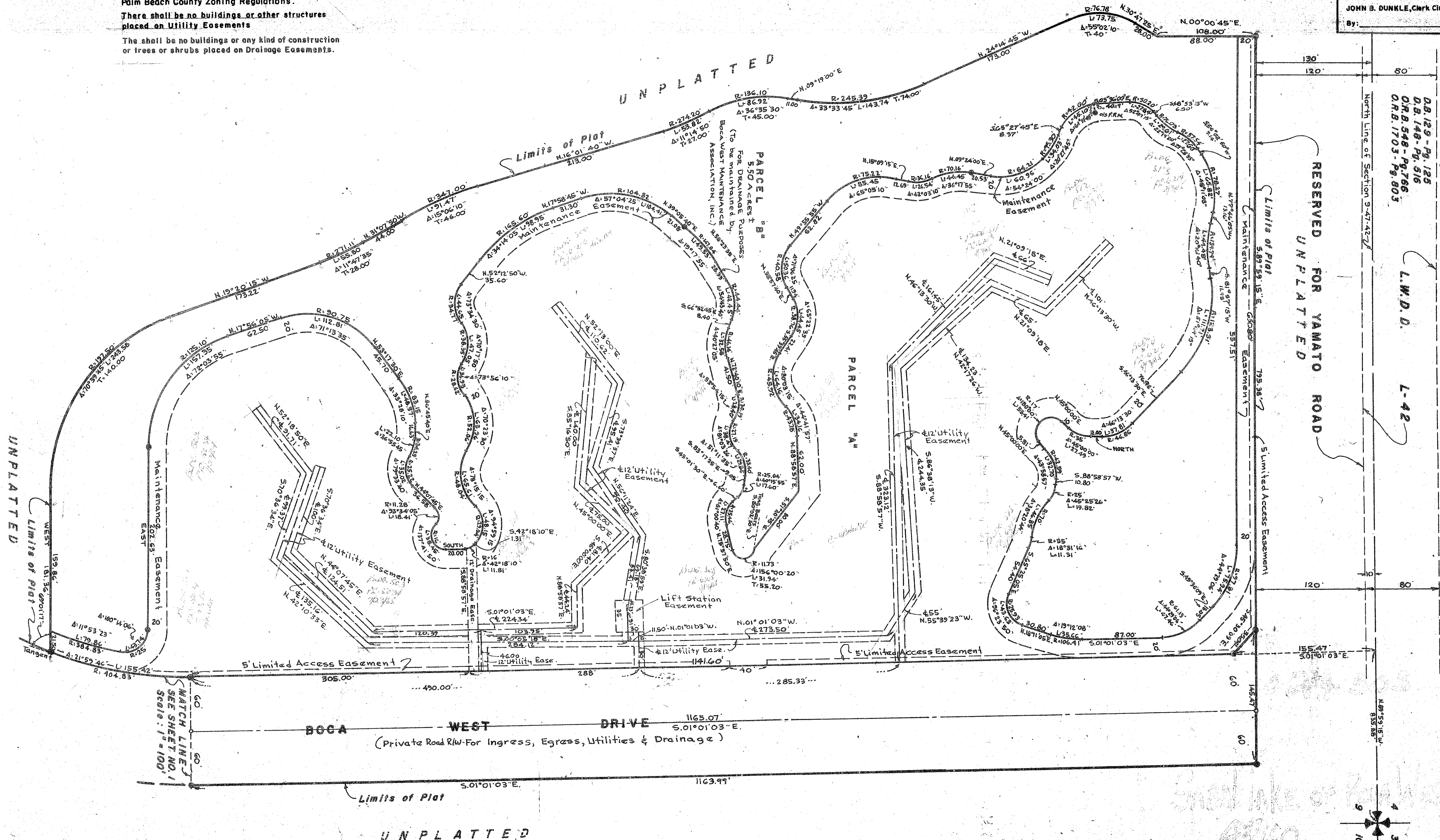
- denotes Permanent Reference Monument.
- denotes Permanent Control Point.

All bearings shown hereon are relative to an assumed meridian used throughout Boca West. Building Setback Lines shall be as required by Palm Beach County Zoning Regulations.

There shall be no buildings or other structures placed on Utility Easements

There shall be no buildings or any kind of construction or trees or shrubs placed on Drainage Easements.

STATE OF FLORIDA
COUNTY OF PALM BEACH
This Plat was filed for record at
this day of _____, 1981
and duly recorded in Plat Book No. _____
on page _____
JOHN B. DUNKLE, Clerk Circuit Court
By: _____



D.B. 129 - Pg. 125
D.B. 148 - Pg. 516
O.R. 548 - Pg. 766
O.R. 1703 - Pg. 803

L.W.D.D.
L-42

